

# R LUM

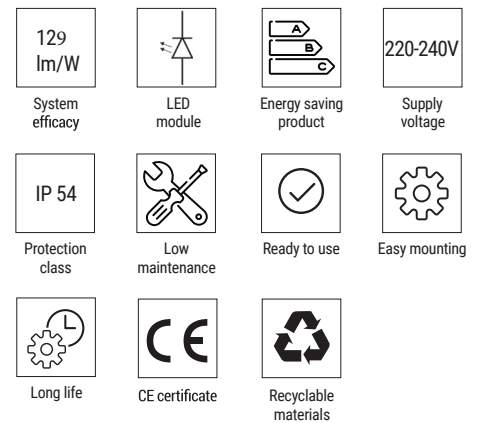


LUMENIA  
INTERIOR

R LUM luminaire is an indoor luminaire that offers optimal lighting, easy installation and low maintenance. Due to the minimalist design it can easily be combined with other types of indoor lighting fixtures to create harmony in any given space.



|                       | R LUM   |
|-----------------------|---|
| System efficacy       | Up to 129 lm/W  |
| Supply voltage        | 220-240 VAC 50 ÷ 60 Hz  |
| Power                 | 10 - 36 W   |
| Luminous flux         | 1,290 - 4,640 lm  |
| Power factor          | 0.9   |
| Weight                | 0,6 - 1,1 kg  |
| CCT                   | 4,000 K, 3,000 K optional; (version with MS); 3000 / 4000 / 5000 K (CCT switch) |
| CRI                   | > 80  |
| Ingress protection    | IP 54   |
| Mechanical strength   | IK 08   |
| Operating temperature | -20 °C to +40 °C  |
| Colour                | White   |
| Housing material      | Polycarbonate   |
| Guarantee             | 5 years   |
| Certificates          | CE  |



## MAIN FEATURES

No flickering  
Easy installation

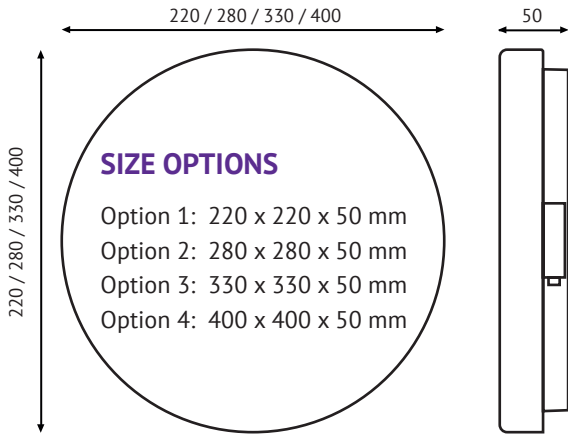
## APPLICATIONS

Corridors  
Toilets  
Staircases

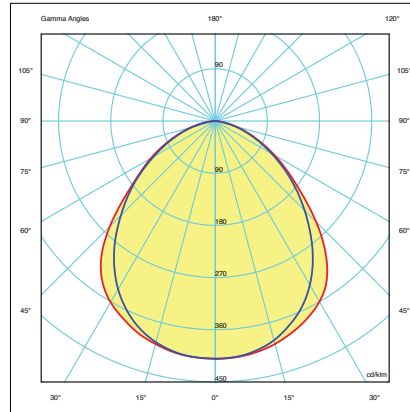
## ACCESORIES

HF Motion Sensor

# DIMENSIONS



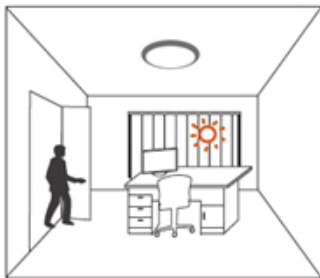
# OPTIC



R LUM: Suitable for corridors, toilets and staircases

# MOTION SENSOR

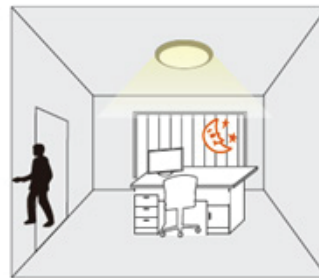
Reducing energy consumption of buildings is no longer possible just with an integration of highly efficient LEDs. Integrated sensor solutions provide additional energy savings and dynamic control of the light, not only with presence detection, but also with measuring the daylight and adjusting the light levels of the light.



The light keeps off during daytime even when movement is detected. (Ambient lux level is above preset daylight threshold)



With movement and insufficient ambient lux level, the light is triggered on 100% by the detector.

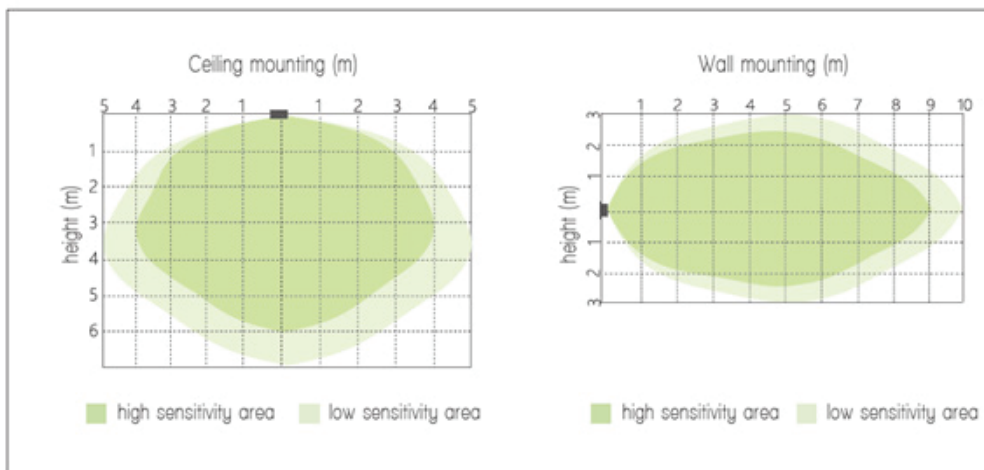


If there is no more movement, the light dims to stand-by dimming level after hold-time.



The light turns off automatically after stand-by time.

## Detection area:



## Possible settings:

### 1. Stand-by time

This is the time period that the light remains at a low level before it is completely turned off.

- I - 0s
- II - 1min
- III - 10min
- IV - +∞



|     | 1 | 2 |       |
|-----|---|---|-------|
| I   | ● | ● | 0s    |
| II  | ○ | ● | 1min  |
| III | ● | ○ | 10min |
| IV  | ○ | ○ | +∞    |

### 2. Daylight threshold

Different daylight threshold can be preset on DIP switches. Light will always turn on upon movement if daylight sensor is disabled.

- I - Disable
- II - 50Lux
- III - 10Lux
- IV - 2Lux



|     | 3 | 4 |         |
|-----|---|---|---------|
| I   | ● | ● | Disable |
| II  | ○ | ● | 50Lux   |
| III | ● | ○ | 10Lux   |
| IV  | ○ | ○ | 2Lux    |

### 3. Hold-time

Hold-time refers to the time period that the light remains 100% on if no more movement is detected.

- I - 30S
- II - 60S
- III - 180S
- IV - 10min



|     | 5 | 6 |       |
|-----|---|---|-------|
| I   | ● | ● | 30S   |
| II  | ○ | ● | 60S   |
| III | ● | ○ | 180S  |
| IV  | ○ | ○ | 10min |

### 4. Sensitivity

Sensitivity can be adjusted by selecting the combination on the DIP switches for different applications.

- I - 100%
- II - 75%
- III - 50%
- IV - 10%

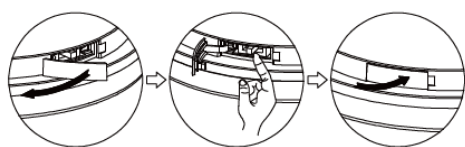


|     | 7 | 8 |      |
|-----|---|---|------|
| I   | ● | ● | 100% |
| II  | ○ | ● | 75%  |
| III | ● | ○ | 50%  |
| IV  | ○ | ○ | 10%  |

## CCT SWITCH (version without MS)

Open the side window, adjust the color temperature as you need (As shown). Close the window after adjustment.

Pay attention: please note it is important that the window should be flat to meet the waterproof (IP) rating.



## PRODUCT VARIATIONS

| Article       | Power [W] | Luminous flux [lm] * | Efficacy [lm/W] | Body type    | Weight [Kg] | Additional options      |
|---------------|-----------|----------------------|-----------------|--------------|-------------|-------------------------|
| R.10.4000.220 | 10        | 1290                 | 129             | 220 x 220 mm | 0.50        | Dimmable, Motion sensor |
| R.18.4000.280 | 18        | 2322                 | 129             | 280 x 280 mm | 0.75        | Dimmable, Motion sensor |
| R.24.4000.330 | 24        | 3096                 | 129             | 330 x 330 mm | 0.93        | Dimmable, Motion sensor |
| R.36.4000.400 | 36        | 4640                 | 129             | 400 x 400 mm | 1.05        | Dimmable, Motion sensor |

\*Luminous flux is valid for CCT 4000 K

The latest validated data is available at [www.lumenia.com](http://www.lumenia.com).